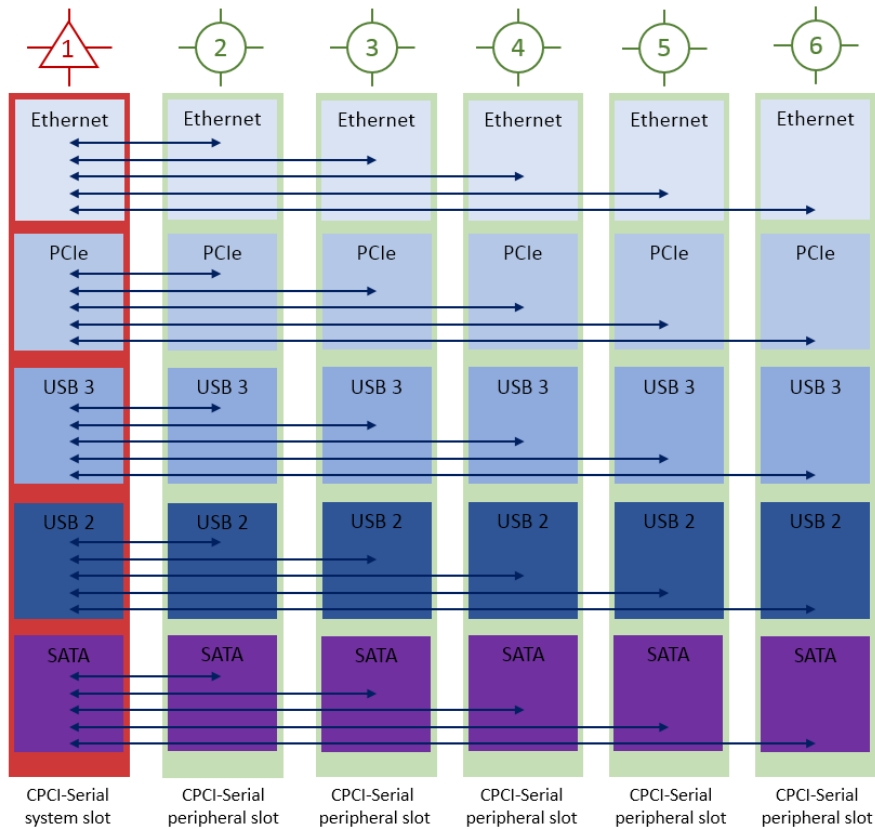


## Amphenol Backplane Assembly & System Integration

Amphenol-BSI have been designing, assembling and testing backplanes for more than 30 years. Our experience of backplane design, manufacturing, development and electrical test technologies allows us to deliver the highest performance backplane at a product cost you can bring to the market. As part of the Amphenol Corporation, we continue to invest in our technologies to ensure we remain positioned as the most extensively tooled Backplane Supplier in the industry.

## Backplane Topology



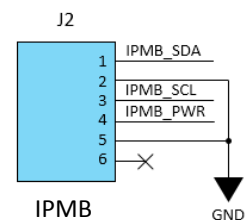
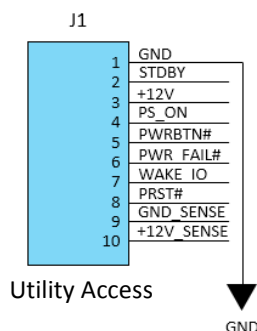
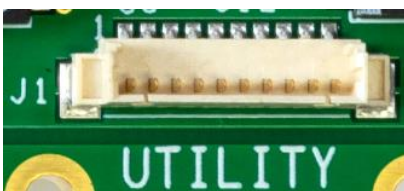
## Power Delivery

- 3x Ground locations
- 1x Standby location
- 2x 12V locations



PEM Broaching Standoff	
Thread size x Pitch	M3 x 0.5
Height from PCB surface	4mm ±0.13
Material	Carbon Steel
Current rating	25A

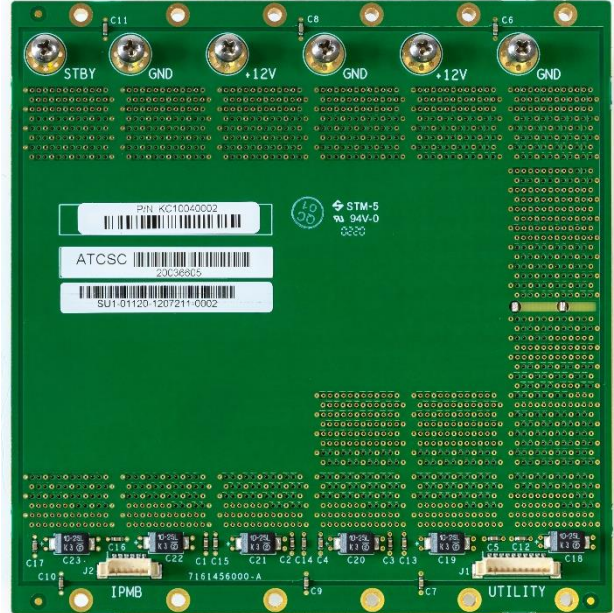
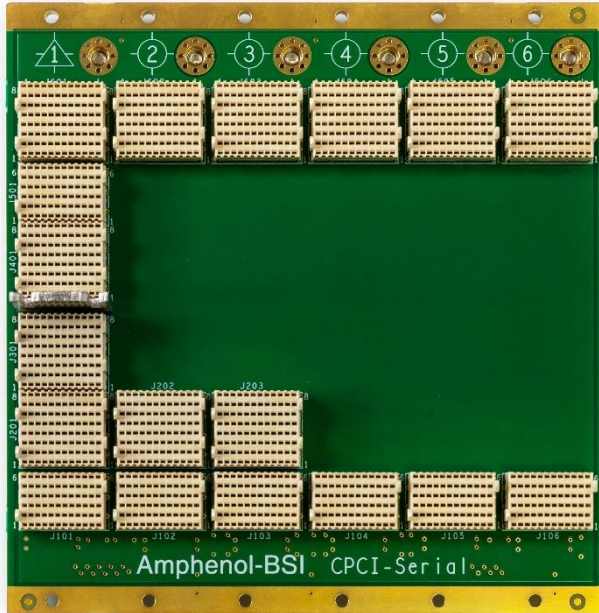
## Utility Interfaces



Amphenol 1.25mm wire-to-board

## Amphenol-BSI 3U 6-slot CompactPCI Serial Backplane

Amphenol-BSI's range of PICMG compliant backplanes includes CompactPCI Serial which modernizes CompactPCI to include high-speed serial Ethernet, PCIe, SATA and USB interconnects. These high-speed serial interconnects are capable of data rates up to 12Gb/s.



### General Information

- CompactPCI Serial Specification PICMG CPCI-S.0 R2.0
- 1x CompactPCI Serial left system slot
- 5x CompactPCI Serial peripheral slots
- Amphenol AirMax VS connector system
- High-speed serial interfaces up to 12.5Gb/s
- Optimised for high-speed signal performance
- Optional RTM assembly
- Dimension: 125.92mm x 128.50mm x 4.40mm
- Utility connector for signal access
- IPMB connector for System Management
- Multiple power locations for distributed delivery
- Edge plating to minimise EMI emissions

### Ordering Information

## Fully Customised Solutions Available

Backplane Profile	Mechanical			Electrical				
	Name	Pitch	RTM	System Slot	Ethernet	PCIe	USB	SATA
KC10040002	0.8"	yes	left	yes	yes	yes	yes	yes
KC10040008	0.8"	no	left	yes	yes	yes	yes	yes

### Contact

AMERICAS	EUROPE	ASIA
Saul Santos	Des King	Denise Li
Saul.santos@amphenol-tcs.com	desmond.king@amphenol-tcs.com	denise.li@amphenol-tcs.com
+1.408.321.0629	+353.41.980.6992	+86.519.6889.6507