

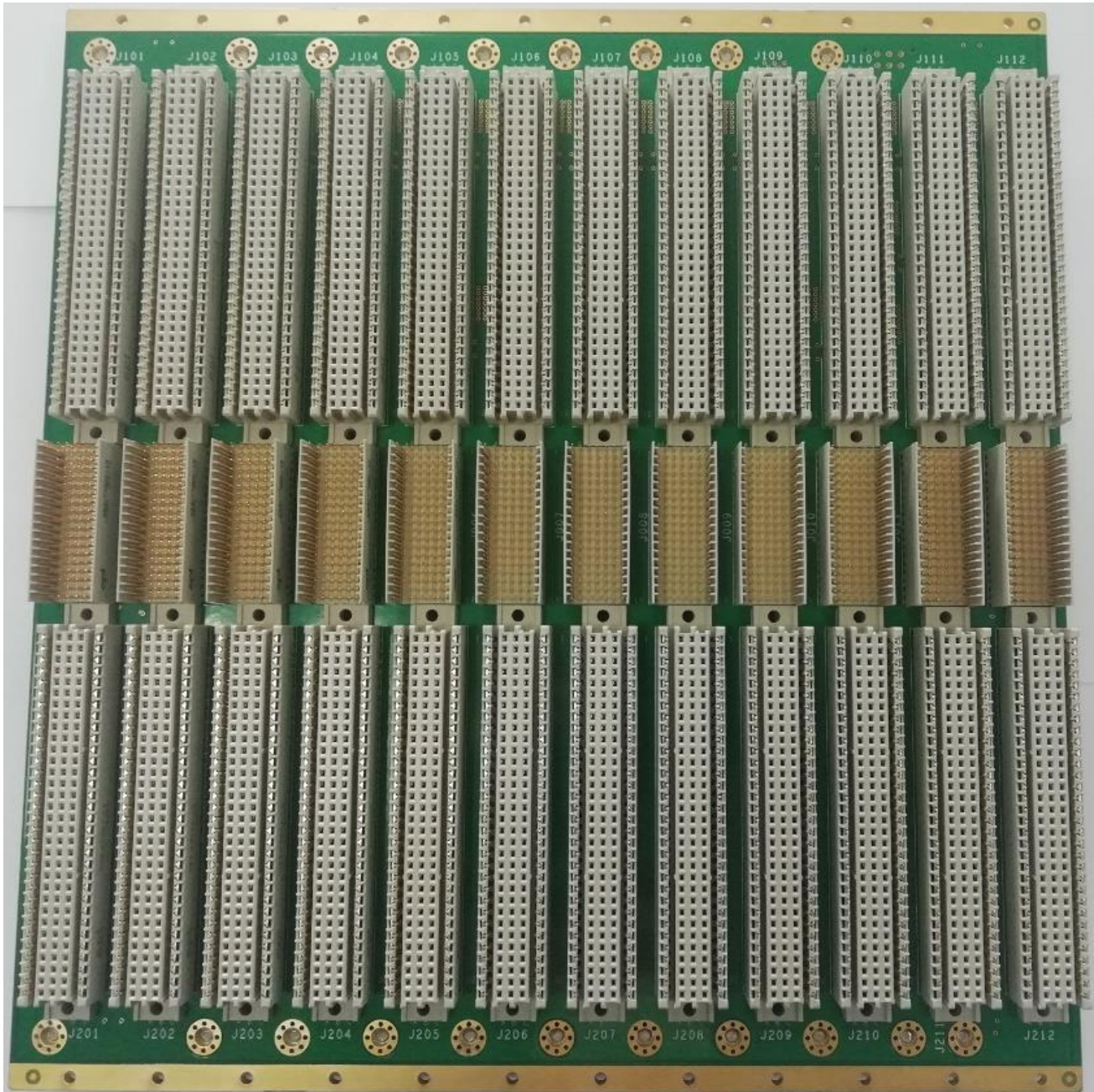
# VME64x 6U 12-slot Backplane with RTM provision

Backplane profile part no. KC10050006



## Amphenol Backplane Assembly & System Integration

Amphenol-BSI have been designing, assembling, and testing backplanes for more than 30 years. Our experience of backplane design, manufacturing, development, and electrical test technologies allows us to deliver the highest performance backplane at a product cost you can bring to the market. As part of the Amphenol Corporation, we continue to invest in our technologies to ensure we remain positioned as the most extensively tooled Backplane Supplier in the industry.



Enabling the Evolution of Technology

[www.amphenol-bsi.com](http://www.amphenol-bsi.com)

**Amphenol-BSI**

Backplane Assembly & System Integration

## Amphenol-BSI VME64x 6U 12-slot Backplane

Amphenol-BSI's range of VITA compliant backplanes includes VME64x. Our 6U 12-slot VME64x backplane with RTM provision is one of the varieties of ABSI's VME64 backplane products.

We understand that all applications may require fully customisable backplanes which is why ABSI continue to invest in our Engineering team to provide our customers with a Solution Provider that they can trust and grow in partnership.

### Power Delivery

- x10 Ground locations
- x4 +3.3V locations
- x4 +5V locations
- x1 +12V location
- x1 -12V location



PEM Broaching Standoff	
Thread size x Pitch	M3 x 0.5
Height from PCB surface	4mm ±0.13
Material	Carbon Steel
Current rating	30A

### General Information

- ANSI/VITA 1-1994 for VME64
- ANSI/VITA 1.1-1997 VME64 Extensions
- Utility connector for signal access
- Active daisy chain
- Optional passive or active termination
- Optional RTM assembly
- Multiple power locations for distributed delivery
- Edge plating to minimise EMI emissions.
- Dimension: 262.05mm x 242.88mm x 3.20mm
- +5V Standby, +/-VS1 and +/-VS2 access

## Fully Customised Solutions Available

### Ordering Information

Backplane Profile Name	Mechanical			Electrical		
	Pitch	RTM	Manual Daisy Chain	Automatic Daisy Chain	Passive Termination	Active Termination
KC10050001	0.8"	no	no	yes	no	yes
KC10050003	0.8"	no	no	yes	yes	no
KC10050004	0.8"	yes	no	yes	yes	no
KC10050005	0.8"	no	no	yes	no	yes
KC10050006	0.8"	Yes	no	yes	no	yes

### Contact

#### MARKETING

Martin Walsh

Martin.walsh@amphenol-tcs.com

+35-3863871768

#### ENGINEERING

Mayank Anand

Mayank.Anand@amphenol-fci.com

+91-7903580813

